

# KORUM



THE ESSENTIAL

# BIG FISH GUIDE

THE METHODS, RIGS AND BAIT YOU  
NEED TO CATCH A NEW PERSONAL BEST

In association with

**AnglingTimes**

# >>> IT'S TIME TO CATCH YOUR BIGGEST

Welcome to the first Korum Big Fish Guide!

In this guide the highly successful Korum consultants show you how to tackle six of the UK's favourite species. From choosing the right venue, picking a swim, selecting the most effective rig, to using the right baits, you will find all the information you need right here.

At Korum it is our aim to develop new tackle ideas that will not only catch you more fish, but also aid you in your search for bigger specimens. We hope that the hard-earned hints and tips that we have packed into this guide will serve you well in the pursuit of your new personal bests this year.



The Korum team of on the bank consultants and sponsored anglers have an encyclopedic knowledge that we use to develop and refine all of our new products.



Duncan Charman



Chris Ponsford



Gary Newman



Mark Cole



Paul Billington



Ade Kiddell



Stuart Jupp



Julian Chidgey



John Walsh



Paul Garner

## >>> BAGGING YOUR BIGGEST BARBEL



Barbel fight like tigers and you need strong gear, even for medium sized specimens

There has never been a better time to catch a big barbel. The best way to catch them is using either a swim feeder, or straight lead with a PVA bag of free feed. Here's what to look for and the gear you will need to catch your biggest ever barbel.

**O**ne of the most enigmatic and exciting of all our fish species, barbel are now present in rivers up and down the country putting a new PB within reach of most anglers. Big powerful fish, often found in beautiful rivers, mean that barbel fishing has become increasingly popular in recent seasons, and methods and tactics have developed rapidly.

Although you can catch barbel on the float, your best chance of a new PB will probably be legering, either with a swim feeder, or straight lead. These rigs are easy to tie and easy to use and you will find details on pages 6 and 7. Here's what to look for and the gear you will need.

### Where To Fish

Barbel like flowing water, usually with a gravel bed, so look for swims with extra pace, especially on small rivers. On large rivers the noted swims will often be well known and your local tackle shop will point you in the right direction. During the day barbel will often be near cover, as this gives them a sense of security, so look for any features in the river. Weed beds, particularly the dark green 'onion' reed, snags, sudden changes in depth and undercut banks will all provide the ideal conditions as do sharp bends where the flow increases. Get out on the bank when the rivers are low and clear with a pair of Polaroid glasses and you will often spot cover that is normally hidden below the surface.

### When To Fish

Whilst you can catch barbel at all times of the day, they are one species that often really come on the feed as the light levels begin to fall as dusk approaches. Often you will catch more in the last two hours of daylight than you will by fishing hard for the rest of the day, so make sure you stay on until last light.



Small rivers can hold massive barbel. In summer look for cover and increased water flow, especially over gravel bottoms.

### 5 THINGS TO REMEMBER

- 1 - Barbel like flowing water over gravel bottoms
- 2 - Make sure you use strong tackle, hooks and line
- 3 - Barbel love pellets. Use them for hook bait on a hair
- 4 - Leger and feeder fishing are the best methods for barbel
- 5 - Make sure your fish is fully recovered before letting it go

### You Need Tough Tackle

Barbel have a well earned reputation as amongst the hardest fighting of all our coarse fish, couple this with the big powerful rivers that they often live in, necessitating the use of big feeders and leads, and you will need to tackle up accordingly. For smaller rivers the **Korum 3G 11' 1.75lb Barbel** rod is perfect, moving up to the **Neoteric 12' Twin Tip** for bigger rivers and specimen fish. Couple these with a 50 size reel and 8-12lb Korum Reel Line.

Position your rods facing slightly downstream with the tips up in the air, the **Korum Double Rod River Tripod** allows you to get your rods in the perfect position even on rocky banks. Bites are normally indicated by the tip whacking round as the barbel moves off downstream, so it is essential to be on the ball and sit right next to your rods.

### The Best Baits

Pellets have revolutionized barbel fishing over the last ten years. As a general rule, the smaller the pellets you use the more bites you will get, so I start with two 8mm **Sonubaits Hali-hookers** on a hair rig, going down to a single 6mm pellet if bites are hard to come by. In the feeder or PVA stick a mixture of **Sonubaits Hemp 'n' Hali Crush** groundbait, **Hemp 'n' Corn** particles and **4mm 5 pellets**

produces an incredible flavour slick and gives lots of small particles to keep the barbel grubbing around for hours. Remember to recast at regular intervals to keep a constant stream of bait going into the swim.

>>> Korum consultant Duncan Charman with a large barbel caught on Sonubaits Hali-hooker pellets



Barbel love pellets. ^  
Try these ^  
Hali-hookers ^



The Korum Neoteric Quiver Twin Tip rod is perfect for bigger rivers and specimen fish.

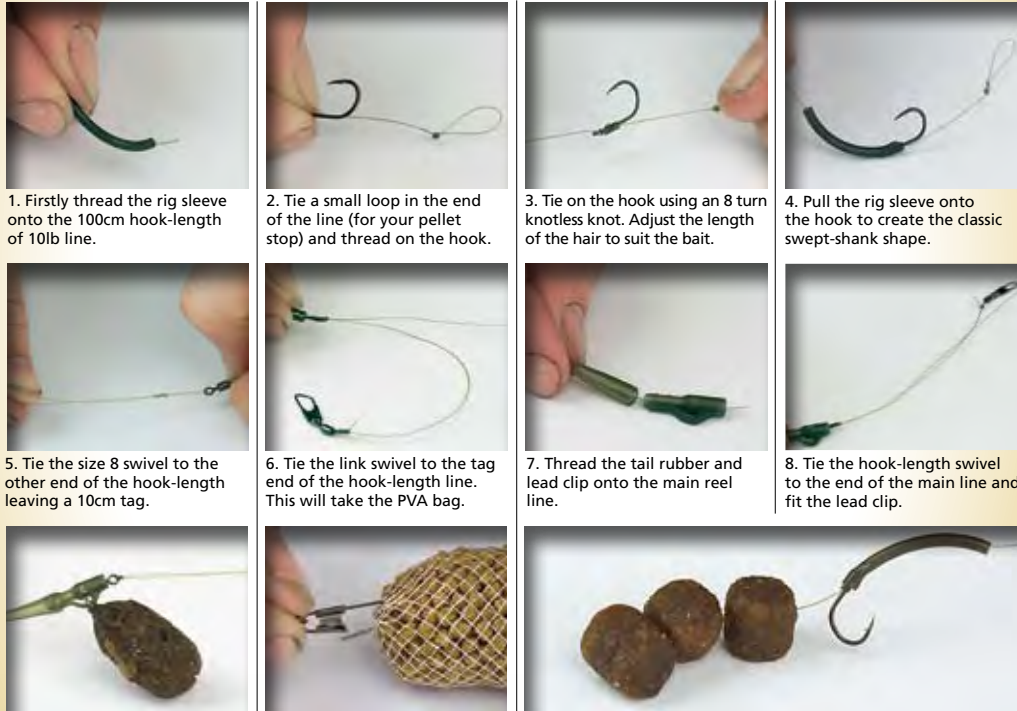


Fishing with a PVA stick of pellets has become the standard tactic for barbel anglers. This version is an easy way of attaching the PVA stick close to the lead, giving a trail of pellets with the hook-bait in pole position.



- You will need:
- 10lb Korum line
  - 2-4oz Lead
  - Lead clip and matching tail rubber
  - Size 8 swivel
  - Link swivel
  - Korum size 12 S3 hook
  - Korum anti-eject rig sleeve
  - Pellet stop

## The Barbel **PVA STICK**



1. Firstly thread the rig sleeve onto the 100cm hook-length of 10lb line.
2. Tie a small loop in the end of the line (for your pellet stop) and thread on the hook.
3. Tie on the hook using an 8 turn knotless knot. Adjust the length of the hair to suit the bait.
4. Pull the rig sleeve onto the hook to create the classic swept-shank shape.
5. Tie the size 8 swivel to the other end of the hook-length leaving a 10cm tag.
6. Tie the link swivel to the tag end of the hook-length line. This will take the PVA bag.
7. Thread the tail rubber and lead clip onto the main reel line.
8. Tie the hook-length swivel to the end of the main line and fit the lead clip.
9. Attach the lead to the lead clip and adjust the tail rubber tension so it will eject if snagged.
10. The link swivel allows you to easily add a PVA stick or bag to the rig just before you cast out.
11. Use 2 or 3 pellets on the hair, held on using the pellet stop. Leave about 5mm between the bend of the hook and the first pellet.

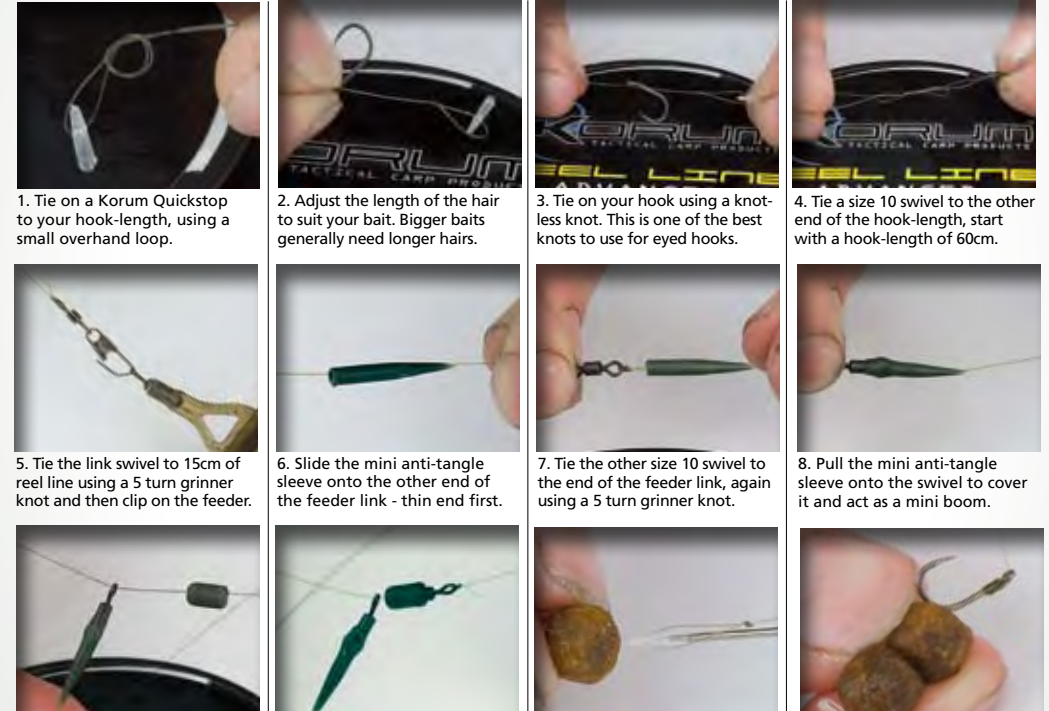
### The PVA Stick Rig



- You will need:
- 4-8lb hook-length line
  - Korum Mesh feeder
  - Korum size 14 S3 hook
  - Link swivel
  - Two size 10 swivels
  - Buffer bead
  - Mini anti-tangle sleeve
  - Korum Quickstops

The pellet feeder is gaining favour with specialist anglers who want to get lots of bait in. Use it with a 4lb hook-length for bream, tench and chub, stepping up to 8lb when barbel are the target. Here's how to make the rig.

## The Pellet **FEEDER**



1. Tie on a Korum Quickstop to your hook-length, using a small overhand loop.
2. Adjust the length of the hair to suit your bait. Bigger baits generally need longer hairs.
3. Tie on your hook using a knotless knot. This is one of the best knots to use for eyed hooks.
4. Tie a size 10 swivel to the other end of the hook-length, start with a hook-length of 60cm.
5. Tie the link swivel to 15cm of reel line using a 5 turn grinner knot and then clip on the feeder.
6. Slide the mini anti-tangle sleeve onto the other end of the feeder link - thin end first.
7. Tie the other size 10 swivel to the end of the feeder link, again using a 5 turn grinner knot.
8. Pull the mini anti-tangle sleeve onto the swivel to cover it and act as a mini boom.
9. Thread the feeder link first and then the buffer bead onto your main line.
10. Tie the main line to the hook-length swivel and pull the buffer bead onto the swivel.
11. Thread one or two Sonubaits 5-pellets onto the hair. Other hook baits can also be used.
12. The baits should sit just beyond the bend of the hook for maximum effectiveness.

### The Pellet Feeder Rig



## >>> MIX A POWERFUL PELLET GROUND BAIT



Pellets are now so widely used for barbel that they have become an instantly recognised food on most rivers throughout the UK. To take advantage of this try this powerful pellet groundbait.

By using Hemp & Hali Crush for the base of the mix you create an instant flavour trail as it washes out of the feeder. This will encourage barbel in your swim to feed and also 'pull' them from downstream as they follow the flavour trail right up to your feeder.

You can add just one size of halibut pellet to the mix, 4mm is a good choice, but for added interest it's also useful to add a few larger ones and also some broken boilies if you are using them on the hook.

For hook-baits with this mix try 10mm Crab & Crayfish Action Boilies, 8mm Monster Crab & Mussel S Pellets, 8mm Hali-Hookers or Pellet 'O's.

### WHAT YOU NEED

- Hemp & Hali Crush Groundbait
- Halibut Pellets (use sizes from 4mm to 10mm)
- Hemp 'N' Corn
- CSL Liquid Flavour

### >>> HOW TO MIX A PELLET BASED BARBEL FEEDER GROUND BAIT <<<



1 - Add a squirt of CSL to the water you are going to use for the groundbait.



2 - Add Sonubaits Hemp & Hali Crush groundbait to the bowl.



3 - Add the water a small amount at a time and mix in well. Keep adding and mixing.



4 - Now add a good quantity of Hemp 'N' Corn - include some of the juice.



5 - Add a handful of of halibut pellets - you can use different sizes if you want.



6 - The final mix containing pellets, hemp and odd grains of sweetcorn.



### WHAT YOU NEED

- Hemp & Hali Crush Groundbait
- Halibut Pellets (use sizes from 4mm to 10mm)
- Hemp 'N' Tigers - Bag & Stick Mix

A lot of anglers don't realise you can use groundbait mixed with water to make a PVA stick mix, providing you are careful and don't add too much water. The advantage of using water instead of oil is that it is water soluble and releases the flavours into the swim better. The mix shown here is a fantastic and safe way to make a mix packed with attraction and feed. The only thing you need to be careful of is that you make sure the mix feels almost dry by adding enough Hemp & Hali Crush. Ideally it 'only just' wants to stick together when you squeeze it. This is the perfect consistency for using in a stick mix or even in a PVA bag.

For hook-baits with this mix try 10mm and 15mm Crab & Crayfish Action Boilies, S Pellets, Hali-Hookers, Tigers or Pellet 'O's.

### >>> HOW TO MAKE A PVA STICK MIX FOR BIG CARP <<<



1 - Add a tin of Hemp 'N' Tigers to a bowl and also the flavoured juice.



2 - Then add a good handful of pellets. Let these absorb some of the moisture.



3 - Add a tub of Bag & Stick Mix and mix in. This is an additive designed for PVA sticks.



4 - Finally add Hemp & Hali Crush and mix until the mix feels almost dry.



5 - The final mix is full of strong attraction and is dry enough to use with PVA.

## >>> MAKE A GREAT CARP STICK MIX

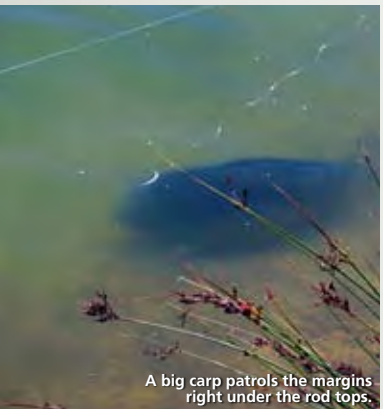
## >>> CATCH YOUR BIGGEST CARP



Carp like this Common/Ghost cross are now more common in commercial fisheries

There's never been a better time to catch a big carp. Day ticket fisheries throughout the UK now hold large fish that are getting bigger all of the time. All you have to do is track down the bigger fish, which comes down to location and correct bait choice.

**F**ew species have caught the imagination like carp, with a huge number of lakes now holding specimens. You don't need to fish the giant gravel pits to catch a new PB though, many commercial fisheries hold more than the odd surprise specimen that are well worth targeting.



A big carp patrols the margins right under the rod tops.

### Location, Location

If there is a decent stock of carp in your local lake then location is unlikely to be an issue, but finding the swims where you will catch more fish than other anglers requires more thought. Look for areas where the carp can get away from angler pressure. Unfancied corner pegs can be worth a go if the lake is busy, island margins, reed beds, in fact most types of feature will hold carp. And never ignore the margins. Carp will patrol right under your rod tips, especially in the evening and a bait placed close-in can be the best option for outsized specimens. Remember, you can probably catch carp from every peg on most commercial fisheries, but to catch more and bigger fish location is the key.

### Don't Go Undergunned

Most lakes, even those generally considered as 'commercials' contain larger than average carp, and fish over the twenty pound barrier can be expected on many fisheries. Even if the chance is slim, it pays to be tackled up with gear that will land a heavyweight carp for that occasion when a PB comes along. As a general rule, line should be a minimum of 8lb, stepping up to 12lb when bigger fish and weed are present that will put your gear under increased strain. Using these heavy lines requires balanced tackle. A 12ft 2.75lb test curve rod is ideal for most forms of carp fishing, be it using a bolt rig, method feeder, or even at a push floater fishing. Couple this with a 60 size reel or larger and you have the perfect set-up.



Small commercial waters now contain some fantastic carp.

### 5 THINGS TO REMEMBER

- 1 - The biggest carp will often stay clear of pressured swims
- 2 - Look for features and especially the margins
- 3 - Make sure your gear is strong enough to land big fish
- 4 - If you can't use boilies try hookable pellets or maize
- 5 - Don't ignore surface feeding fish in summer

A 12ft 2.75lb test curve rod like the Korum Neoteric is ideal for most forms of carp fishing, be it using a bolt rig, method feeder, or even at a push floater fishing.



Boilies and pellets are two of the best baits to use on commercial day-ticket waters.

### Life After Boilies

Boilies are the mainstay of modern carp fishing, with flavours like Crab & Crayfish, Strawberry and White Chocolate catching almost everywhere. Many commercial fisheries do not allow the use of boilies though, so it can pay to have more than just boilies in your bait armoury.

### S-Pellet Tuff 1's and Hali

**Hookers** are amongst the most instant of carp baits and stand out really well over a bed of 8mm Halibut pellets. Alternatively, **Hemp 'N' Maize** is another instant bait that will work everywhere. When the carp are on top, feed **8mm Oily Floaters** to get the carp feeding hard, then use a **Fishmeal Hookable Floater** on the hook.



Paul Garner with a fantastic Common taken from a day ticket water.

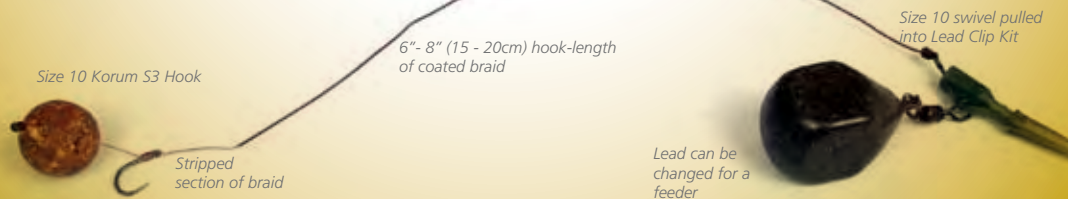
The combi rig is a great carp rig that can be used with bombs, feeders or PVA bags and sticks. Using a strippable coated braid hook-length, the combi rig offers a supple presentation that makes it hard for carp to eject.



- You will need:
- Korum size 10 S3 hook
  - Coated Braid (strippable)
  - Boilie stop · Size 10 swivel
  - Lead Clip Kit Semi Fixed Saftey Rig

## The carp **COMBI RIG**

1. Cut off 14" (35cm) of strippable braid. Go for a breaking strain of at least 15lb.
2. Strip back about 4 inches of coating from one end of the braid.
3. Tie a small overhand loop in the stripped end of the braid.
4. Put your chosen boilie or pellet on the end of the stripped braid.
5. Thread the hook-length through the eye of the hook, make sure the line exits from the front of the eye.
6. Make eight turns down the shank.
7. Pass the hook-length back through the eye. The boilie needs to be about 10mm from the bend.
8. This is the stripped section of the braid closest to the hook that forms the supple section.
9. Tie on the swivel using a four turn grinner knot.
10. Thread your tail rubber and anti-tether bead onto the main line.
11. Tie your hook-length swivel to the main line using a four turn grinner knot.
12. Lock the hook-length swivel into the anti-tether bead using the pin provided. Ensure that the tail rubber is on just far enough so that the lead is easily lost.



## The Carp Combi Rig

Fancy a bit of surface action this summer. This controller rig is hassle-free and is less prone to tangling than traditional set-ups.



- You will need:
- Korum 10lb main line
  - Korum 8lb line for the hook-length
  - 20 gram controller
  - Size 10 Korum S3 hook
  - Large line stops
  - Size 10 swivel
  - Anti-tangle sleeve
  - Buffer bead
  - Korum hair stop

## The **SURFACE RIG**

1. Tie a small overhand loop in the end of 2 metres of 8lb line. This is the hair loop.
2. Thread the hook onto the hook-length and adjust the hair length to suit your bait size.
3. Use a knotless knot. Make five turns down, then three up to make the hair stand out.
4. Check the length of the hair, the bait should sit tight to the hook.
5. Thread a line stop onto the main reel line. This will hold the controller in position.
6. Now thread your controller onto your main line.
7. Follow this with a buffer bead.
8. Tie on a size 10 swivel, then pull the buffer bead controller and line-stop down like this.
9. Take a 60cm length of 10lb line and tie a double overhand loop in one end.
10. Thread on the anti-tangle sleeve.
11. Then tie the 10lb line to the swivel and push the anti-tangle sleeve over the swivel.
12. Attach the hook-length to the loop on the short length of 10lb line. The 10lb line acts as a stiff boom, reducing tangles and making it simple to change hook-lengths.



## The Surface Rig

## >>> MIX A FISHY METHOD GROUNDBAIT

The method feeder covered in a powerful fishy groundbait is about as good as it gets when it comes to attracting carp to your hook-bait.

This mix uses three powerful dry ingredients - Super Carp Method, S-Pellet Groundbait and Crushed Halibut Pellets,

which creates a powerful cocktail of carp attraction, plus a tin of tuna for a fishy appeal.

The mix needs to be prepared at least an hour before fishing to let the dry particles fully absorb water. For hook-baits with this mix try 15mm Crab & Crayfish Action Boilies, 11 or 16mm Tuff 1's S Pellets, Drilled Boilies or the Tigers in the Hemp 'N' Maize.



### WHAT YOU NEED

- Super Method Carp
- S-Pellet Groundbait
- Crushed Halibut Pellet
- Hemp 'N' Maize
- Tin Of Tuna

### >>> HOW TO MIX A FISHY CARP METHOD FEEDER GROUNDBAIT <<<



1 - Add equal quantities of the three dry groundbaits to a bowl.



2 - Thoroughly mix the dry ingredients to ensure an even mix.



3 - Add water slowly and mix. This groundbait mix will take a lot of water.



4 - Now add a good quantity of Hemp 'N' Maize - include some of the juice.



5 - Add a tin of mashed up tuna and the juice it comes in for a fishy aroma.



6 - The final mix containing lots of feed can be easily moulded around a method feeder.



### WHAT YOU NEED

- Hemp & Hali Crush
- Supercrush Green
- Green Giant Creamed Corn
- Hemp 'N' Corn
- Pineapple Liquid Flavour

## >>> GO WITH GREEN FOR BIG TENCH

Tench are often found in heavily weeded clear lakes and pits. This means that sight feeding is important which is why this green coloured groundbait works.

The colour, whilst blending in with the bottom, is different to normal mixes and makes the sweetcorn in the mix really stand out.

When mixing this groundbait it's best if you mix the creamed sweetcorn and Hemp 'N' Corn (plus juice) into the dry groundbait first and then add the water. This prevents over wetting the mix. Although we have used creamed sweetcorn in a tin you can liquidise your own if you want and use it in place of the tinned version.

This fine mix can be used with a flat method feeder, in an open-ended or cage feeder, or thrown in by hand to create a carpet of attraction.

For hook-baits with this mix try 10mm Pineapple Action Boilies, 6mm drilled boilies, S-Pellets, Sweetcorn and Action Pop-ups.

### >>> MAKE A GREEN TENCH GROUNDBAIT <<<



1 - Add a squirt of pineapple flavour to the water you are going to use for mixing.



2 - Add the two dry groundbaits in equal quantities to the bowl and mix together.



3 - Add the tin of creamed sweetcorn - you can liquidise your own if you want.



4 - Add half a tin of Hemp 'N' Corn and some of the juice. Mix thoroughly together.



5 - Now add the flavoured water slowly until you have a dry but sticky mix.



6 - The mix is full of attraction and the green colour makes it different to other mixes.

## >>> TIME TO TRAP A BIG TENCH



One of our most traditional and enigmatic species, the tench is a fantastic fish. Strong, powerful and a willing feeder on lakes (and rivers) throughout the country, they can be caught on both traditional margin float methods or scaled down carp tactics.



### 5 THINGS TO REMEMBER

- 1 - Don't neglect the margins, even on large waters
- 2 - Watch for small 'pin-prick bubbles' over your feed
- 3 - Tench love weed so don't be afraid to fish near it
- 4 - Big baits aren't always best. Try 10mm boilies and pellets
- 5 - Use strong tackle, tench are very strong fighters

**M**isty mornings might be the romantic view of tench fishing, but on big exposed lakes they can often be caught right through the day and night if you get your tactics right.

Although highly mobile, location has to be spot-on when targeting tench as they follow well defined routes around most lakes. They will use bars and other features as markers allowing them to navigate their way around, so locate these features and fish either on them or close by for the best chance of success.

### Traditional With A Twist

Catching margin patrolling tench must rank as one of the most traditional ways of catching a new PB this summer, yet you can give it a new twist that will make even this style of fishing much more effective. Many gravel and clay pits often shelve steeply away from the bank into deep water, which can make float fishing difficult, particularly if there is weed present as well. One answer is to fish with a float attached using a fixed waggler adaptor. With the bulk of the shot set 60-100cm from the hook (instead of locking the float). The bait will then sink almost vertically through the water making it less likely to pick up stray strands of weed. The bulk also helps prevent

the float drifting in the surface tow. Plumb up and set the float about 30cm overdepth. Then place a small amount of sinking putty 15cm from the hook. This holds the bait still and promotes classic lift bites.

A big tench can put up a really dogged fight, so when weed is present there is no room for any weak links in your tackle. A Big Fish Float Rod is required to balance the minimum 6lb main line and size 12-14 hooks needed to stop that all-important first powerful run.

### Stop Them In Their Tracks

Small groups of tench can often be spotted in margins right under the rod tip and a little and often helping of **Hemp 'N' Corn** will be enough to get them to stop and investigate. Highly visual baits, such as corn, will often stop tench in their tracks, as they are predominantly sight feeders and don't forget to look for small pin-prick bubbles on the surface over your bait. That's a sure sign tench are on the feed.



▲ Many good tench lakes also contain big carp. Make sure your gear is strong enough to cope with both.

Although highly mobile, location has to be spot-on when targeting tench as they follow well defined routes around most lakes.

### Modern 'Method'

The method feeder, used in conjunction with **Hemp 'n' Hali Crush** has taken a lot of difficult tench waters apart. Hemp is an excellent tench attractor, and on many venues that are heavily carp fished, the tench are not slow to pick up on the abundant supply of pellets. One thing to remember is to scale down the size of your method feeder when after tench. Don't give them too big a meal, just enough bait to cover a medium flat method feeder is enough.

### Keep It Short

Tench have a knack of ejecting the hook-bait without the merest hint of an indication. Short hook links of no more than 6 inches (15cm) can result in a lot more fish on the bank. Small 10mm **Sonubaits Strawberry or Pineapple Action Boilies** take some beating on the hair and match perfectly with a size 14 Korum S3 hook that has the perfect combination of strength and lightness.

### Don't Be Undergunned

Method feeder fishing puts a lot of strain on a rod and you should think carefully about what you choose for the job. **The Korum Neoteric Twin-tip** fitted with the heavier 2.2lb top fits the bill perfectly, because it combines quite a powerful test curve with a forgiving through action that allows the rod to load more progressively on the cast.

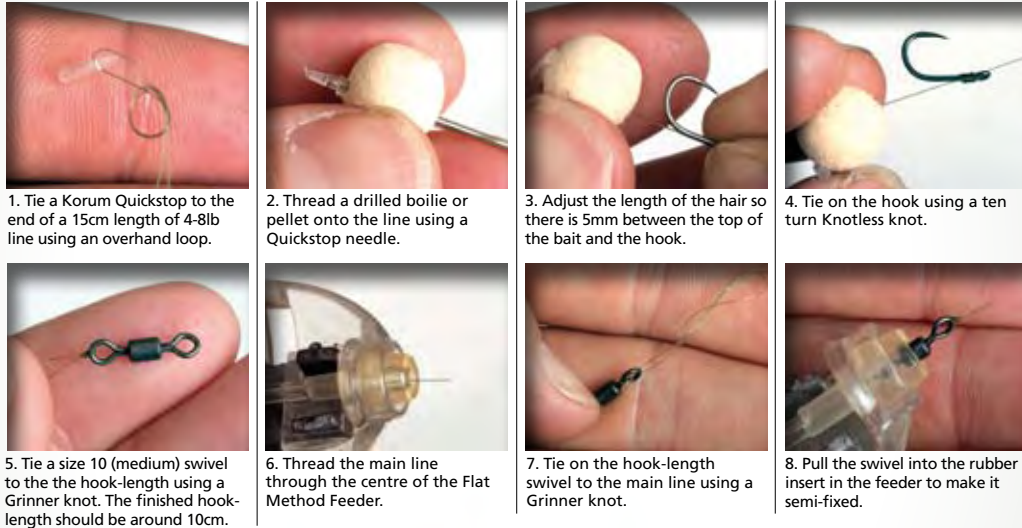


The flat method feeder is superb for catching tench on all waters, especially when fishing at distance on large lakes and pits.

## The flat method FEEDER



You will need:  
 · 4lb to 8lb Korum line · Flat Method Feeder  
 · Quickstops and Needle · Size 10 swivel · Korum size 14 53 hook



1. Tie a Korum Quickstop to the end of a 15cm length of 4-8lb line using an overhand loop.

2. Thread a drilled boilie or pellet onto the line using a Quickstop needle.

3. Adjust the length of the hair so there is 5mm between the top of the bait and the hook.

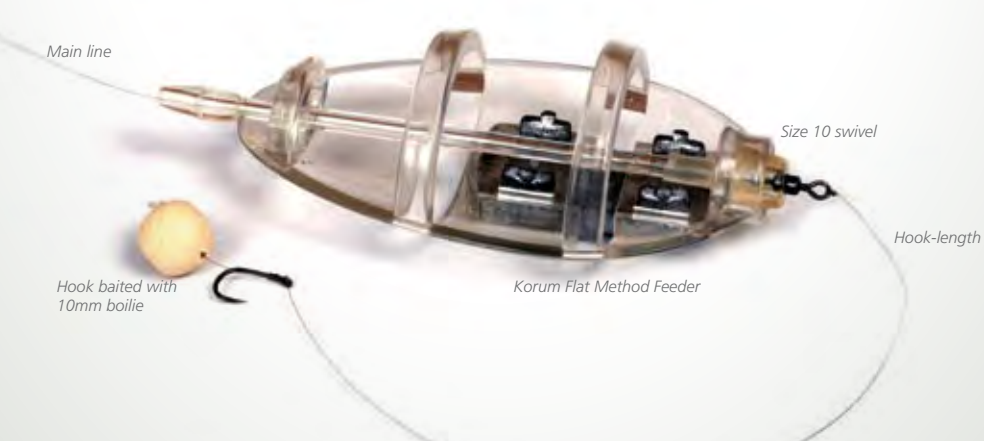
4. Tie on the hook using a ten turn Knotless knot.

5. Tie a size 10 (medium) swivel to the hook-length using a Grinner knot. The finished hook-length should be around 10cm.

6. Thread the main line through the centre of the Flat Method Feeder.

7. Tie on the hook-length swivel to the main line using a Grinner knot.

8. Pull the swivel into the rubber insert in the feeder to make it semi-fixed.



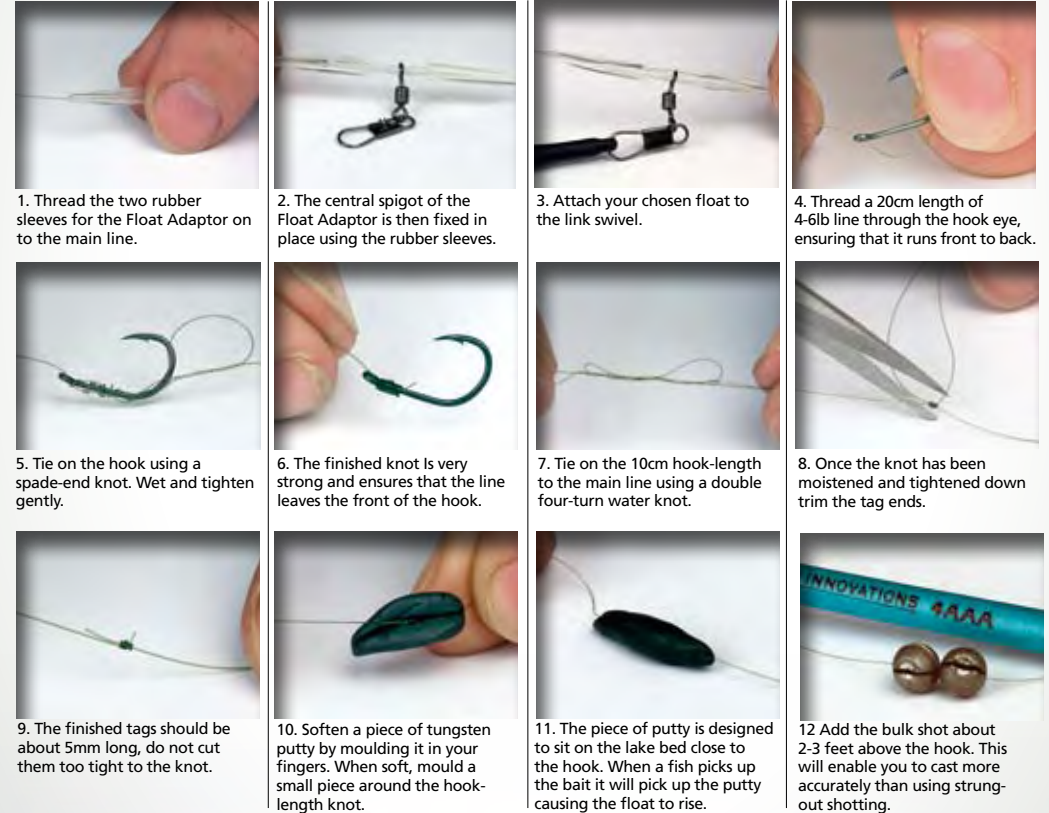
## The Flat Method Feeder Rig

This margin float rig for tench is simple to set up and use. Placing the weight low down reduces drag and promotes unmissable lift bites.



You will need:  
 · 4lb Korum line · Preston straight wagglers  
 · Korum size 12 54 hook · Preston Wagglers adaptors  
 · Kryston Heavy Metal putty · Korum Quickstops

## The tench float MARGIN SET-UP



1. Thread the two rubber sleeves for the Float Adaptor on to the main line.

2. The central spigot of the Float Adaptor is then fixed in place using the rubber sleeves.

3. Attach your chosen float to the link swivel.

4. Thread a 20cm length of 4-6lb line through the hook eye, ensuring that it runs front to back.

5. Tie on the hook using a spade-end knot. Wet and tighten gently.

6. The finished knot is very strong and ensures that the line leaves the front of the hook.

7. Tie on the 10cm hook-length to the main line using a double four-turn water knot.

8. Once the knot has been moistened and tightened down trim the tag ends.

9. The finished tags should be about 5mm long, do not cut them too tight to the knot.

10. Soften a piece of tungsten putty by moulding it in your fingers. When soft, mould a small piece around the hook-length knot.

11. The piece of putty is designed to sit on the lake bed close to the hook. When a fish picks up the bait it will pick up the putty causing the float to rise.

12. Add the bulk shot about 2-3 feet above the hook. This will enable you to cast more accurately than using strung-out shooting.



## The Margin Float Rig

## >>> HOW TO CATCH A HUGE BREAM



Bream will often swim in large shoals and whilst they are not the strongest fighters a big bream is a magnificent fish. They are also easy to catch once you have located where they feed and large catches are always on the cards.

**O**ver the last two decades the bream record has gone through the roof, with hundreds of lakes now capable of producing fish of eight pounds plus. Even double figure bream are available to most anglers, making a new bream PB a realistic target.

Bream are often nocturnal feeders and this is by far the best time to target them if you get the chance. During daylight they will often stop feeding completely in anything less than perfect conditions, particularly in clear water. If you have to fish during the day, then look for lakes or rivers with plenty of colour. As the light begins to fade though they suddenly become active in clear water and begin the search for an easy meal.



▲ Bream will often give their location away by rolling on the surface at dawn or dusk so make sure you keep your eyes on the water when fishing. Two rod set-ups work well when combined with open end and method feeders.

### Feeding And Bait

You will struggle to put enough feed into a swim to hold a large shoal of bream for an extended period so it's best to start a session by introducing 6 to 10 balls of groundbait (or use a spod) and then use a feeder to keep topping the bait up on every cast. Bream often feed by dropping down and sucking up a few

mouthfuls of food, this is probably why the feeder and method feeder are so effective. As the ball of groundbait breaks down it forms a little pile of feed that the bream can easily find with the hook-bait right next to it. Bream absolutely love fishmeal and sweet flavours, making Sonubaits F-1 groundbait the perfect feed and it moulds easily around a method feeder. Laced with 3mm and 6mm halibut pellets you have an ultra reliable big bream mix.

**Hali Hookers**, **Tuff 1's** pellets or **10mm Crab & Crayfish Action** boilies go on the hair following the fishy theme that bream love.

### Be Prepared

Bream are not renowned for their fighting abilities, but when fishing the method it does pay to step up both rod and line strength to withstand the constant casting. As a minimum, use 8lb Korum Reel Line with the method feeder and a **Neoteric 12' 2.5lb** rod to give enough casting power. Hook-lengths are 30 to 45cm of 6lb Korum Reel Line tied to a size 14 Korum S4 hook. This might sound like heavy gear, but will give you a fighting chance of landing any stray tench or carp that might put in an appearance. The hook-length is longer than you would use for carp or tench specifically because of how bream dip down to feed. It can also pay not to bury the hook bait in the ball of feed, but let it hang free and settle slightly away from the groundbait making it more visible.

As a minimum, use 8lb Korum Reel Line with the method feeder and a Neoteric 12' 2.5lb rod to give enough casting power. This might sound like heavy gear, but will give you a fighting chance of landing any stray tench or carp that might put in an appearance.

### Watch For Them Rolling

Get your location right and big weights of bream can be on the cards. They are rarely found on their own, so expect line bites when the shoal arrives! Bream shoals are normally easy to locate as they will roll at dawn and dusk giving their presence away for anyone prepared to wait and watch.



### 5 THINGS TO REMEMBER

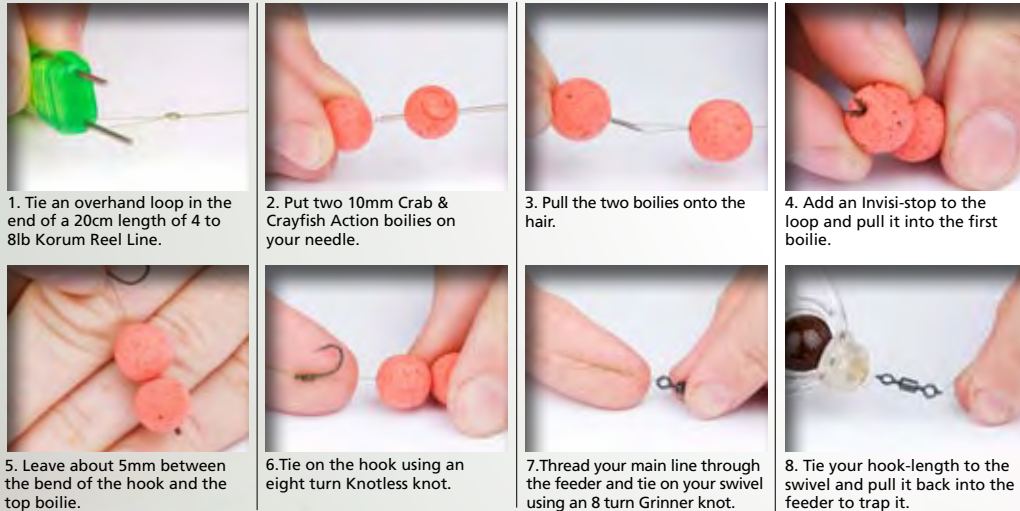
- 1 - Bream feed best at night and in coloured water
- 2 - Be prepared to fish at distance away from the bank
- 3 - Watch for bream rolling it's a great way to locate them
- 4 - Bream love fishmeal and bread based groundbaits
- 5 - Use strong tackle, you might hook a carp or tench

The ball method feeder is a great way to fish for bream. The weight of the feeder acts as a self-hooking bolt rig, which means you can use twin rod set-ups with hanger indicators and alarms. Although for carp it is often advised to bury your hook-bait in the groundbait around your method feeder, for bream it is usually better to have it hanging out.



You will need:  
 · 8lb Korum line · Korum ball method feeder · Size 10 swivel  
 · Korum size 12 S3 hook · Pellet stops · Baiting Needle

## The Big Bream BALL METHOD



### The Bream Method Rig

This is a traditional paternoster type bream feeder rig with a modern twist. The feeder is tied directly to the end of the main line ensuring maximum casting strength and the hook-length is added 'helicopter' style which reduces the chance of tangles. Essentially it works just like a traditional paternoster rig and is a good option if you want to fish your hook-bait slightly away from your feeder.



You will need:  
 · 0.13mm (4lb 12oz) Powerline hook-length line  
 · Korum Open Ended feeder · Korum size 18 S4 hook · Micro swivel  
 · Line Stops · Quickstops & Needle

## The open-ended FEEDER



### The Open End Feeder Rig

## >>> THE ULTIMATE BREAM GROUNDBAIT

Bream love fishmeal groundbait and sweet flavours. Supercrush F1 was developed for F1 carp and has a fine ground pellet base with added sweeteners that bream just can't resist.

Adding some Exploding Fishmeal Feeder makes the mix more active and perfect for using with open-ended feeders.

The finished mix wants to be just damp enough to hold in the feeder. For feeding in balls add a small amount of extra water until it binds together into a ball with a decent squeeze.

For hook-baits with this mix try 10mm Crab & Crayfish Action Boilies, 6mm Strawberry S Pellets, two 4mm Hali-Hookers or White Choc Drilled Boilies.



### WHAT YOU NEED

- Exploding Fishmeal Feeder
- Supercrush F1 Groundbait
- Fin Perfect 1mm Feed Pellets
- Competition 6mm Feed Pellets
- Scopex Liquid Flavour

### >>> HOW TO MIX YOUR BREAM OPEN-END FEEDER GROUNDBAIT <<<



1 - Add a squirt of Scopex to the water you are going to use for the groundbait.



2 - Add the two dry groundbaits to the bowl first and mix together.



3 - Add the water a small amount at a time and mix in well. Keep adding and mixing.



4 - Once you have an even damp mix fluff it and leave for 20 minutes.



5 - Add a good quantity of 1mm pellets and a handful of Competition pellets.



6 - The result is a feed packed groundbait that will explode out of the feeder.



### WHAT YOU NEED

- P-MIX Competition Groundbait
- Exploding Fishmeal Feeder
- Fin Perfect 1mm Feed Pellets
- Hemp 'N' Corn
- Pineapple Liquid Flavour

## >>> BIG ROACH LOVE THIS FEEDER MIX

This roach groundbait mix is the one to use on day ticket carp waters where the roach eat a lot of fishmeal based pellets.

Roach love sweet flavours so the addition of pineapple flavour increases attraction. You can also use other fruit based flavours. The groundbait used as the base includes a mix of Exploding Fishmeal Feeder which is a light mix that combines fishmeal with active ground seeds and P-Mix Competition Groundbait which is a very fine mix that contains ground pellets and crushed hemp. Remember that the added feed pellets will dry the mix a bit, so you may need to add a small amount of water to it after 20 minutes, but don't over wet, this mix should be light, quite dry and of a fluffy texture. If you are using maggot hook-baits add some to the mix before filling your feeder. For hook-baits with this mix try 4mm and 6mm S Pellets and Hali-Hookers, 6mm Drilled Boilies and don't forget maggots.

### >>> MAKE A GREAT ROACH GROUNDBAIT <<<



1 - Add a squirt of pineapple flavour to the water you are going to use for mixing.



2 - Add the two dry groundbaits in equal quantities to the bowl first and mix together.



3 - Add the water a small amount at a time and mix well. You want a dry finished mix.



4 - Add some small 1mm Fin Perfect feed pellets - you can also 2mm ones too.



5 - Add some cooked Hemp 'N' Corn and also add the juice from the tin.



6 - The final mix should be quite dry and very fluffy so it explodes from the feeder.

## >>> IN SEARCH OF BIG ROACH



Korum consultant Duncan Charman with a big silver flanked roach.

Roach are the UK's most common species and can be found in just about every river or lake nationwide. Although not massive by the standards of other species a 2lb roach is an amazing fish. Here's how to track them down and catch them.

**P**erhaps your most difficult task in catching a big roach is finding a venue that consistently produces better than average fish.

### Turn To Carp Waters

Many commercial fisheries contain specimen roach that have learned to feed on the pellets introduced by carp anglers. The problem is that they often don't get a look in during the summer because of the carp, but when the weather is cold the roach continue to feed when the carp have stopped - this can be the best time to target them. Look for swims out of the cold wind, particularly those that get

the full strength of the sun, and the roach are unlikely to be far behind. You will often spot them early and late in the day taking insects from the surface and the splashy swirls are easy to tell from the larger carp.

### Lightning Fast Bites

There is one method that has proven absolutely deadly for big roach recently and that is the Helicopter feeder. When fishing beyond float fishing range, you will need a feeder rig that can introduce hemp/maggots or groundbait, that roach find so attractive, and also nail lightning fast roach bites - roach are very adept at ejecting the bait quickly. The short hook-length of the Helicopter Feeder Rig (see

right) means that finicky roach will feel the bolt-effect of the feeder immediately, giving excellent bites that are hard to miss. One more tip is to try popping up your maggots by cutting a slither of rig foam into the shape of a maggot and using two real maggots alongside the fake one on the hook.

### Feeder & Bait Choice

The Helicopter Feeder Rig (right) uses a block-end feeder suitable for maggots, but you can try an open-end feeder with the mix shown on the previous page too. Normally, a maggot feeding approach works best when it's really cold.

### Balanced Tackle

Tackle needs to be well balanced when fishing for big roach, as you will often be fishing with very light hook-lengths, but need to punch a feeder out to your chosen mark. The **Korum Neoteric Quiver Tip** rod is ideal, as it has a soft tip, yet great reserves of power. A Preston PXR4000 reel loaded with 5lb Reel line completes the set-up.

### 5 THINGS TO REMEMBER

- 1 - Roach will feed throughout the year - even in the cold
- 2 - Bites can be very fast - short hook-lengths work best
- 3 - Keep tackle light. Use small hooks and light hook-lengths
- 4 - You will see roach topping as the evening light fades
- 5 - Roach on carp waters love pellets and groundbait

Designed for catching big roach and rudd with maggot or caster on the hook, this rig is tangle-free and gives a tremendous bolt-effect making bites almost unmissable.



You will need:

- Korum 5lb main line · Preston 40gram Quickload Feeder
- Korum size 18 S4 hook · Size 22 micro swivel · Buffer bead
- Preston Innovations 3.75lb Grand Match Fluorocarbon · Mini anti-tangle sleeve
- Size 10 Link swivel · Tear-drop float stops · Rig foam

## The Helicopter ROACH FEEDER

1. Tie the hook onto 15cm of the Fluorocarbon hook-length.
2. Thread a mini-anti-tangle sleeve onto the hook-length.
3. Tie the micro-swivel to the end of the hook-length.
4. The hook-length should be between 6 and 12cm long.
5. Thread a tear-drop stop on to the main line.
6. Next thread on the hook-link swivel.
7. Followed by the second tear-drop stop.
8. Leave just enough room between the stops to allow the hook-length to turn unimpeded.
9. Thread the buffer bead onto the main line.
10. Tie on the link swivel to the end of the main line.
11. Clip on the feeder and pull the buffer bead down onto the link swivel
12. Cut a tiny square of rig foam, just enough to pop-up the hook bait



## >>> HOW TO CATCH A LARGE CHUB



Ade Kiddell with a large chub caught from a crease swim.

Chub feed all year and are aggressive feeders, but at times they can be very wary and are easily spooked. Take a simple mobile approach, fish lots of swims with features like overhanging trees, snags and creases and you are halfway to netting a new best.

**Chub can be caught in many different ways, on many different baits and are the ultimate opportunists. Small baits like maggots, up to large baits like pellets, meat, paste and boilies are all worth using. Chub can also be caught 365 days of the year, being one of the few species that will continue to feed right through the winter months.**

### Get Close To The Cover

Because shoals of chub are most likely to be found close to cover and snags, particularly during daylight, you need a rig that is not only strong, but allows you to bounce the bait into position. The adjustable link-leger (shown right) is perfect for this.

### Take A Mobile Approach

If you are fishing a new stretch of river the best approach is to be mobile. Have no more than half an hour in each swim you fancy. Look for features - changes in depth, snags, overhanging trees, and creases on the water surface created when fast flowing water runs alongside a slower flow. Any chub present are likely to give you a bite within minutes of casting in. There is little point in loose-feeding, just use a highly visible and smelly bait, like paste, a 10mm boilie or **Tuff 1's** pellets and be prepared for a bite in double quick time.

### Baiting And Waiting

Once you have worked out which swims hold chub you will catch a lot more fish by baiting and waiting. This will give the fish

confidence and if you get them in a feeding frenzy they will hardly notice other members of the shoal being carefully played out. Normally it is easiest to sit upstream of the cover and begin feeding to draw the fish upstream, away from any potential snags. The longer you keep feeding without casting the more chance you will have of catching a lot of fish. Baiting for an hour or more is not too long before making your first cast. Because you need to get the fish feeding hard a small bait feeding approach using baits like maggots or small pellets is best - feeding little and often.

### Chubbing Kit

Chub bites are more sensitive than those from barbel. A quiver tip rod, such as the **Korum Multi-feeder** is ideal, as the soft tip will give the chub more confidence and make bites easier to hit. Load your reel with 6lb line, not because chub are particularly hard fighters, but because the odd rogue barbel is sure to put in an appearance on many rivers!

### 5 THINGS TO REMEMBER

- 1 - Chub love cover so look for overhanging trees and snags
- 2 - They will eat almost all baits, so take plenty of options
- 3 - Chub will feed in the coldest conditions
- 4 - Get chub competing for bait and you'll have a great day
- 5 - Bites may sometimes be sensitive so use a soft quivertip

This is a modern take on one of the oldest rigs in the book, the link leger. Ideal for the roving angler, who needs to constantly adjust the weight of the lead to combat the different conditions.



- You will need:
- Korum Quickstops
  - Size 14 Korum S3 hooks
  - 4-8lb Korum reel line
  - Korum large adjustable line stops
  - Preston Innovations SSG shot

## The adjustable LINK LEGER

1. Cut off a 60cm length of line to act as your hook-length and tie on a Quickstop.
2. Thread on an S3 hook and adjust the hair length to the required distance.
3. Tie the hook using an eight turn knotless knot. Make sure the line exits through the eye front.
4. Hold your line and a 20cm length of 4lb line together. Thread over two large adjustable stops.
5. You have now trapped the short length of line on the main line with the stops.
6. Tie an overhand knot in the end of the 4lb line (this is the link).
7. Add the required number of shot to the link. The last shot rests against the overhand knot.
8. Adjust the length and position of the link by moving the stops and length of the link.
9. Tie on the hook-length using a two or three turn water knot. This is very strong and neat.
10. Make sure you wet the knot when pulling it up tight, trim off the tag ends.
11. The finished rig allows the weight and the hook-length and link to be adjusted.





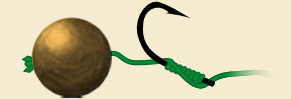
### The Link Leger Rig

# >>> TIE THE IMPORTANT KNOTS

There are many knots you can use to tie your rigs, but the four shown below cover just about everything you need.



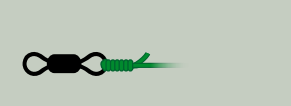
## The Knotless Knot

The most common knot for tying eyed hooks. Also creates a hair and produces a good hooking angle for the hook.

-  Place your bait on the hook-length and thread through the eye from back to front.
-  Wrap line down shank at least six times and thread through the eye back to front.
-  Moisten the line and tighten the knot slowly. Make sure it beds down neatly.



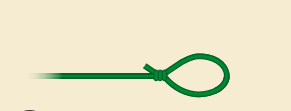
## The Grinner Knot

This is a great knot for tying swivels, it can also be used for tying eyed hooks.

-  Thread the line twice through the eye and make a loop parallel to the mainline.
-  Pass the line 6 times over both lines in the loop.
-  Moisten the line and tighten the knot slowly. Make sure it beds down neatly.




## The Overhand Loop

A good knot for forming loops. Perfect for using on the end of a hair for placing a bait stop in.

-  Fold the line back on itself to form a loop.
-  Take the end of the loop, fold it back and thread it through the new loop as shown.
-  Moisten the line and tighten the knot slowly by pulling on the end of the loop.

## The Double Water Knot

This is a simple knot for joining two lengths of mono line. Works well for hooklengths.

-  Lay the two lengths of line together.
-  Create a large loop in both lines and wrap the shortest ends through the loop 3 times.
-  Moisten the line and pull the knot tight slowly by pulling each line at the same time.

# WWW.KORUM.CO.UK

The Korum web site is a great way to keep updated. Not only does it show all of the product range, there are articles, all the latest news and product releases, instructional videos and the full Korum catalogue available for down loading.

